

**TEST HOMES IN BEAVERTON, OREGON**

- 3 single family homes
- 3000 sqft (5 beds, 3 baths)
- Same neighborhood
- 2-story (wood / drywall construction)
- Fully furnished
- 24/7 security

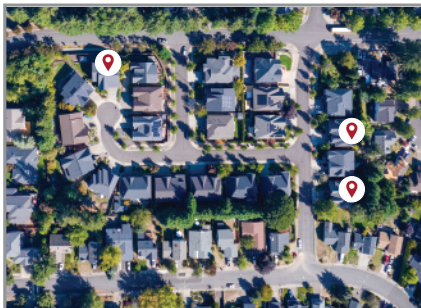


**REAL-WORLD TEST ENVIRONMENT**

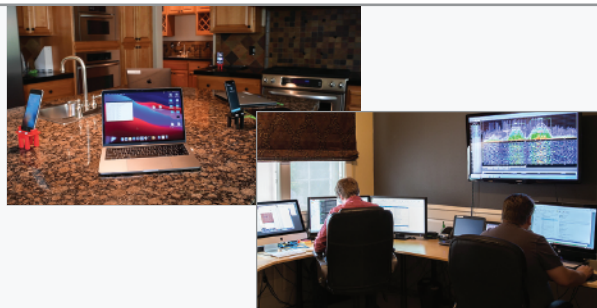
- User stories and scenarios
- Device location / orientation
- Co-existence with common household devices
- Simulated ambient environments (RF, audio, lighting)
- Customizable house configuration
- Device specific installations

**THE SMART HOME ECOSYSTEM**

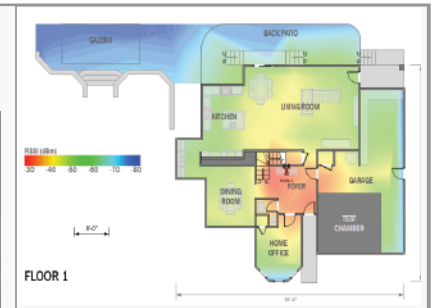
- Camera and security systems
- Entertainment
- Gaming systems
- Appliances
- Smart outdoor
- Home automation



*All 3 homes located in the same neighborhood*



*Fully furnished residential home environments with real-time monitoring and automation*



*Sample data, whole home signal coverage*



**CORE SERVICES**

**WIRELESS PERFORMANCE**

Verify throughput and signal coverage within the home, front yard, backyard, garage, or even off the property.

**COMPETITIVE ANALYSIS**

Compare your device against the competition or within your own products to understand core differences, strengths, and weaknesses.

**AUDIO PERFORMANCE**

Proprietary Distributed Audio Analyzer allows for evaluation of features in a real-world setting to ensure smart speakers stay in sync when playing music simultaneously around the home.